



ANNUAL REPORT

CALENDAR 2019 AND FY20

Opportunity Resources Inc. works to enhance the lives of people with disabilities and help keep our community inclusive.



A MESSAGE FROM JOSHUA KENDRICK, CEO



2019 will be remembered as the year Opportunity Resources galvanized the movement toward full inclusion for individuals with disabilities in our community.

On the ground, our community employment and residential programs expanded opportunities for individuals to work and live successfully in our community. Our Choices program expanded options to participate and volunteer in community activities and

organizations, particularly focusing on the social needs of our growing seniors. Challenging this progress, was the ability of ORI's transportation services to keep up with all of the activity. We asked for your help and were able to expand ORI's fleet of cars and vans.

To firmly embed and sustain 2019's breakthrough advances, Opportunity Resources launched a comprehensive strategic planning process, supported by a grant from the Missoula Community Foundation.

With your support, 2019 has been a benchmark year for Opportunity Resources. Viewed from the perspective of 2020, we are grateful for the opportunities this year presented to develop our shared vision of a reachable, fully inclusive future.

Joshua Kendrick, CEO



"This year, the ORI Board of Directors and Staff have been walking through a strategic planning process that has created exciting new energy, setting Opportunity Resources up for insightful movement into the future."

Barbara Simon, Board of Directors President

2019 IMPACT STATEMENTS: HOW WE'VE MOVED FORWARD



ARTISTS OF OPPORTUNITY

The ORI Art Program continued to grow with total sales of \$46,000. 80 clients earned a total of \$32,000 and one of ORI's celebrated artists was chosen for the U.S. Institute of Disability calendar. [Read More...](#)



CHOICES PROGRAM

The Choices Program continues to provide recreational, educational, cultural, and volunteer opportunities to over 75 individuals with disabilities. In addition, the program deepened community inclusion activities for the 25 older individuals supported by the Senior Team staff. [Read more...](#)



EMPLOYABILITIES

ORI's EmployAbilities services expanded its outreach beyond current adult and young adults with disabilities. Employment Specialists now serve lesser-disabled individuals who are waitlisted for government supported employment services mandated to serve the more-seriously disabled first. [Read More...](#)



REMOTE COMMUNITY SERVICES

Expanded this two-year-old department which brings Supported Living and Self-Directed program services to underserved individuals outside Missoula County by adding a Big Sky Waiver program for Advanced Self-Direct services statewide. [Read more...](#)

2019 IMPACT STATEMENTS: HOW WE'VE MOVED FORWARD



RESIDENTIAL SERVICES

Strengthened ORI's ability to support individuals throughout all life changes by collaborating with Missoula Aging Services to provide training and resources for staff supporting people with Alzheimer's and Dementia.

[Read More.](#)



SPECIALIZED SERVICES

Specialized Services now provides a 24-hour community-based supervision, treatment, counseling by a Montana Sex Offender Treatment Association Clinical member, work and residential living for 26 men with sexual offending behaviors. [Read More.](#)



WOOD PRODUCTS

The Wood Products Division continues to provide meaningful training and employment for ORI clients and provides competitive employment and vocational services as part of ORI's Specialized Services program.

[Read More.](#)

“

We know that equality of individual ability has never existed and never will, but we do insist that equality of opportunity still must be sought.

”

Franklin D. Roosevelt

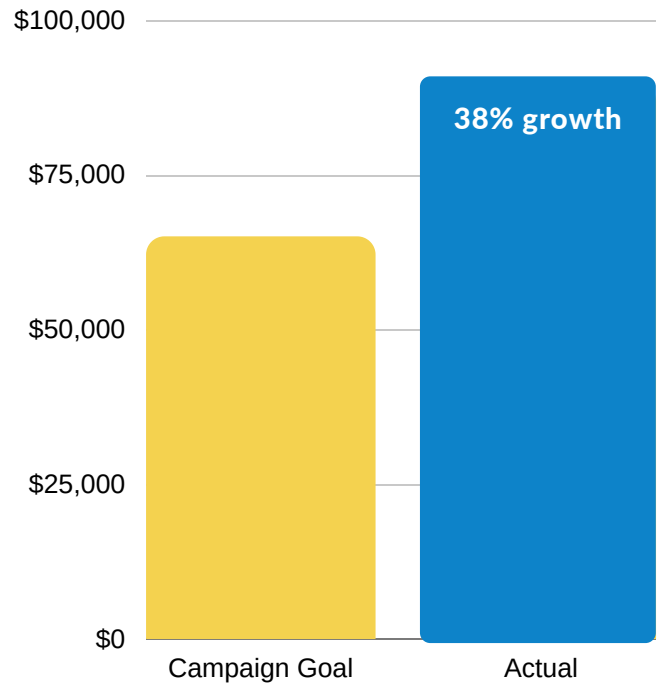
FISCAL YEAR BALANCE SHEET

Current Assets.....	5,051,843
Investments.....	965,837
Land, Buildings & Equipment, net.....	4,475,733
Other Assets.....	<u>375,068</u>
Total Assets.....	<u>10,868,481</u>

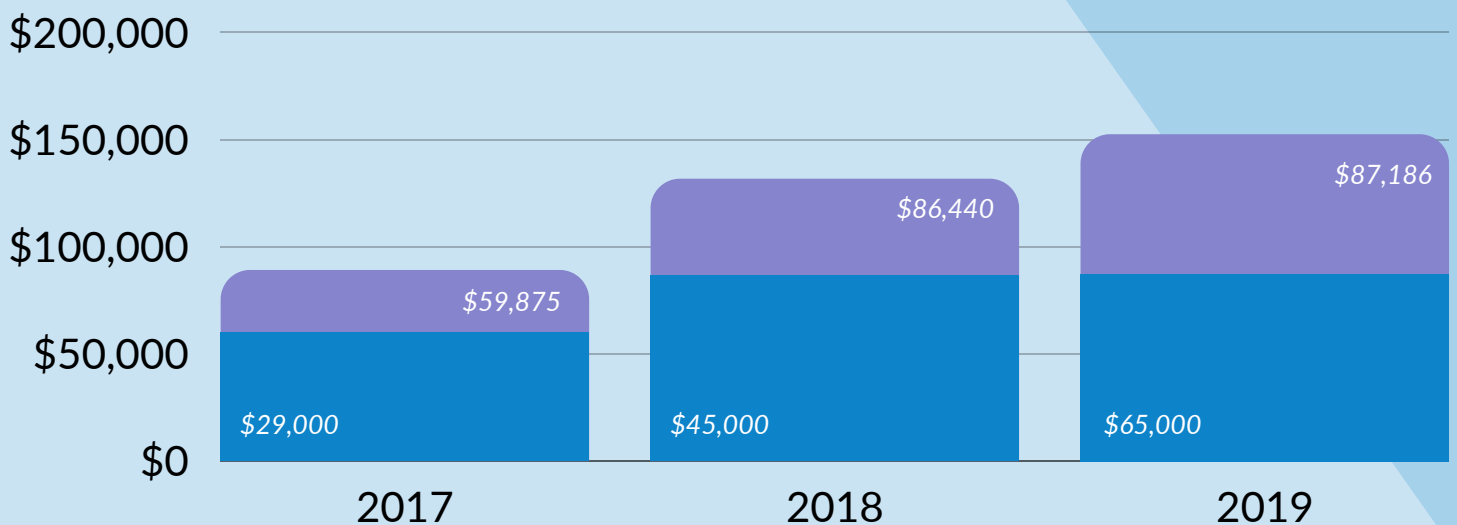
Current Liabilities.....	1,029,521
Long-Term Debt.....	2,383,057
Other Liabilities.....	328,506
Equity.....	<u>7,127,397</u>
Total Liabilities & Equity.....	<u>10,868,481</u>

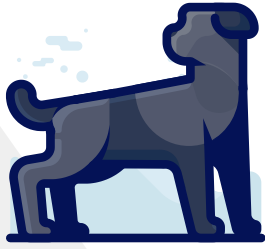
(pre-audit FY20 financials)

ANNUAL FUNDS RAISED: \$89,886!



2019 ANNUAL FUND





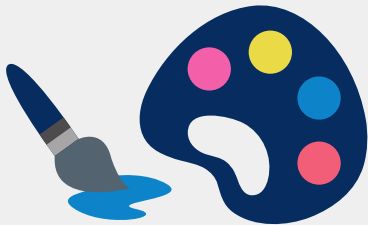
\$17,000

In it's 2nd year, Katie's Kookies sales grew by over 20%, as the client-funded and staffed dog biscuit enterprise expanded its reach in the Missoula market.



\$8,200

20 critical grants were distributed to ORI clients to cover expenses not provided for in their basic funding - for housing, recreation, educational, and medical needs.



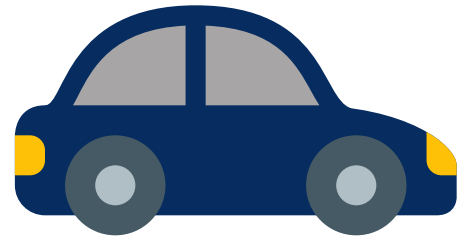
Award Winning

ORI's award-winning art program increased production capacity to fulfill large corporate orders, e.g., 300 personalized mugs for Clearwater Credit Union's re-branding launch.



\$100,181

In 2019, the ORI Endowment surpassed the \$100,000 mark, reflecting the support of ORI donors interested in the long-term sustainability of our organization.



Transportation

Focused fundraising by Opportunity Resources donors added 3 additional passenger vans to the ORI fleet, significantly increasing transportation support for client trips to work, medical appointments, and community activities.

**THANK YOU TO
OUR AMAZING
DONORS!**

[See full list of ORI FY 20 Donors](#)